

Foxhill, Peacehaven, BN10 7SE

Asking Price £319,950

Council Tax Band: C



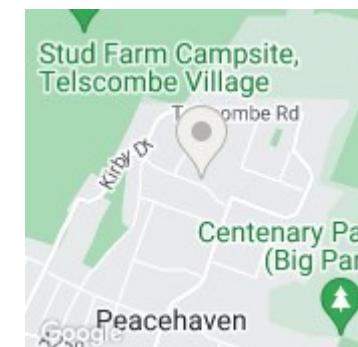
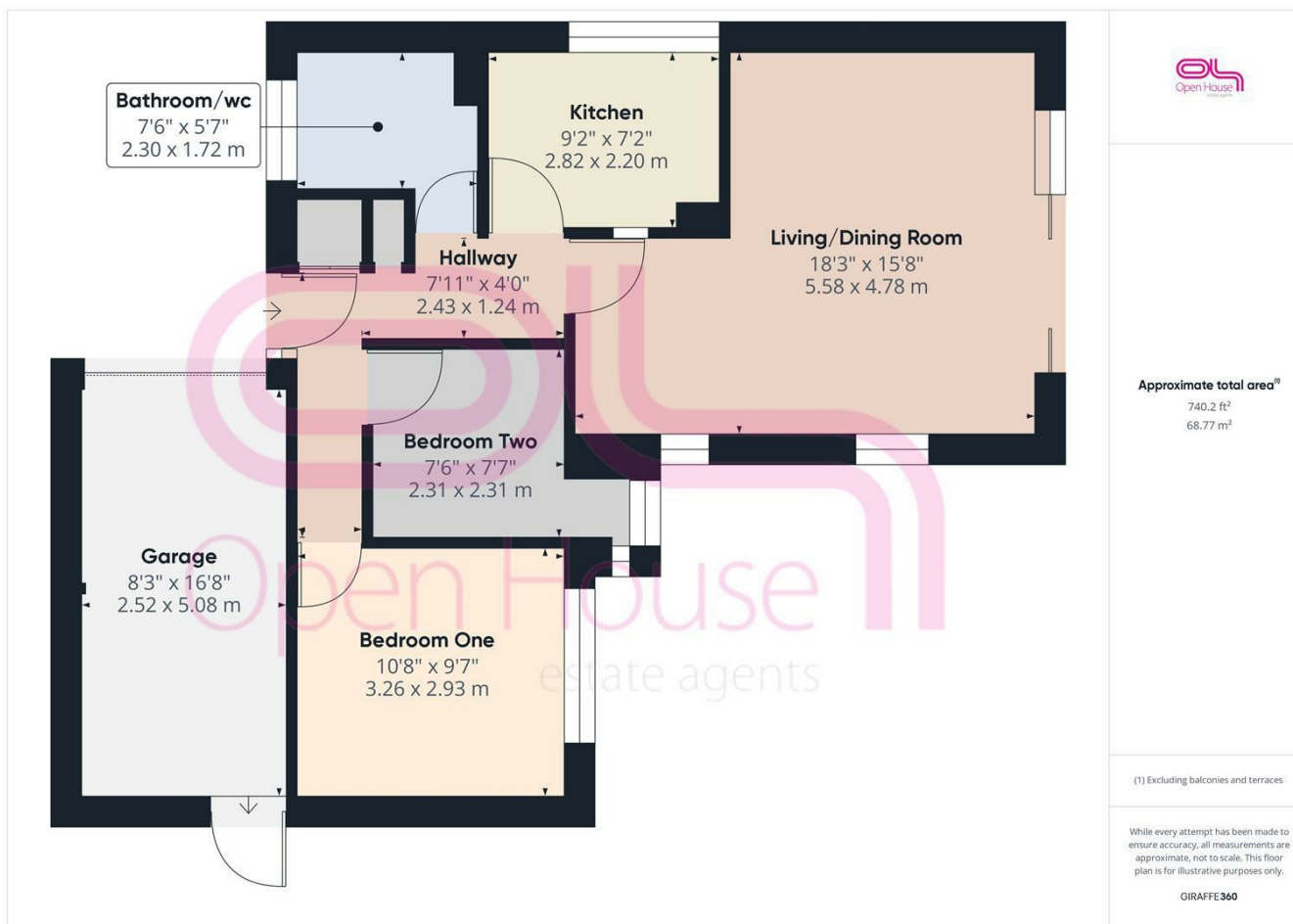
Tucked away in a popular Cul De Sac in the heart of Peacehaven is this lovely two bedroom bungalow which offers no chain. The property comprises of generously proportioned rooms and is considered the perfect choice for first time purchase or those looking to downsize.

The front door opens into the entrance hall which offers storage and access to all principle rooms. Positioned to the rear and overlooking the beautiful, south facing rear garden is the lounge/dining room. Here you will find space for both your soft furnishings and a dining table and chairs. Close by is the fitted kitchen which consists of matching units, work surfaces and appliance space. Two good size bedrooms are offered, both of which south facing. Completing the interior of this delightful home is the bathroom/wc which features a matching suite and tiled walls.

Moving outside you will find the most glorious south facing rear garden. Having been well cared for over the years, the gardens are an excellent size and offer well established flower and shrub borders, trees and a garden shed. Lastly, parking is offered by way of a private parking space and attached garage.



206 South Coast Road, Peacehaven, East
Sussex, BN10 8JP
01273 830 987
bnsales@localagent.co.uk



Energy Efficiency Rating		
	Current	Potential
Very energy efficient - lower running costs		
(92 plus) A		
(81-91) B		84
(69-80) C		
(55-68) D	54	
(39-54) E		
(21-38) F		
(1-20) G		
Not energy efficient - higher running costs		
England & Wales	EU Directive 2002/91/EC	