

115 Dorothy Avenue North, Peacehaven, East Sussex, BN10 8DS

Price £375,000

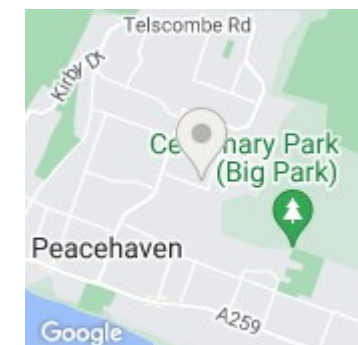
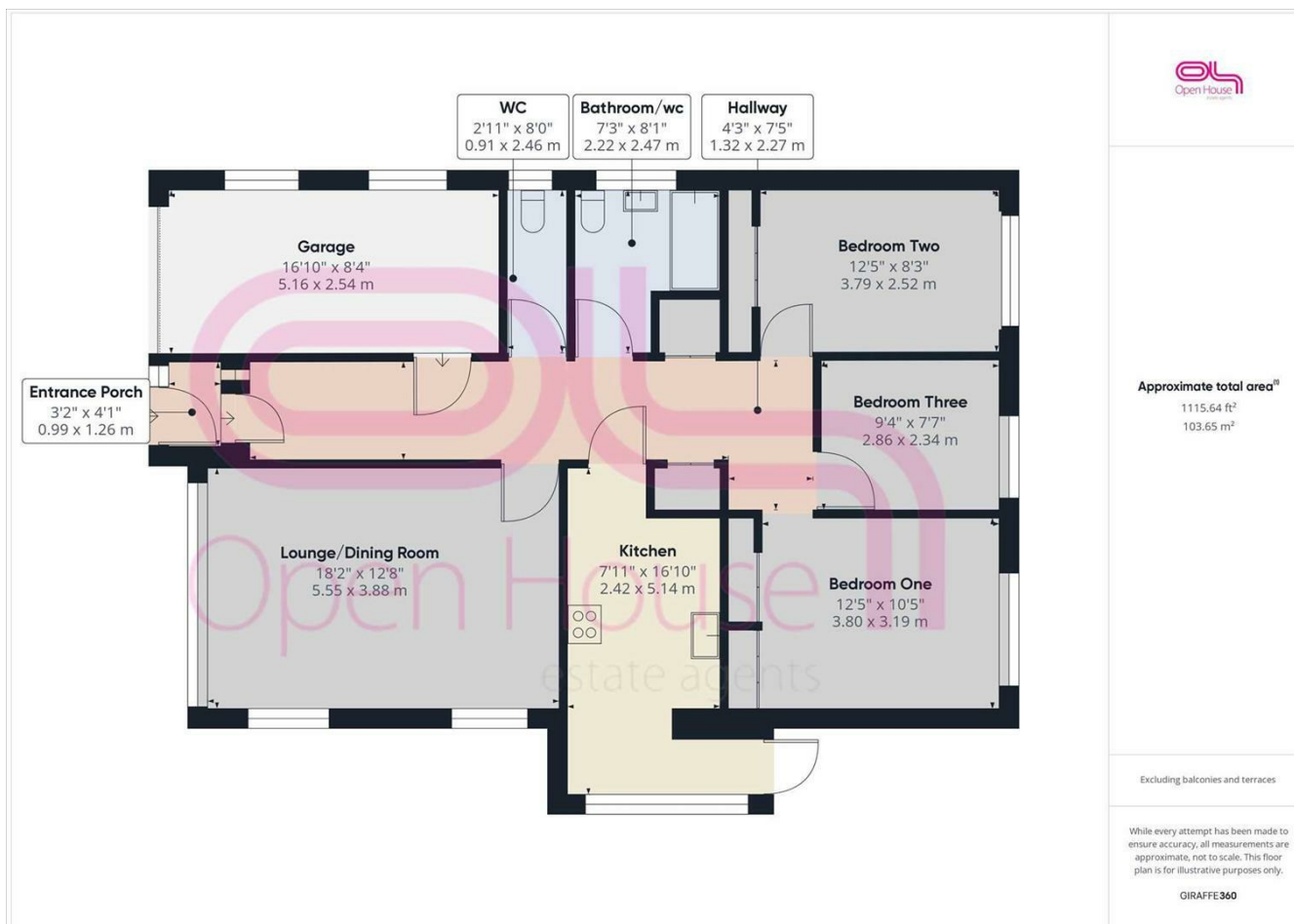
Council Tax Band: D



Here is a fantastic opportunity to purchase an ATTRACTIVE bungalow in CENTRAL Peacehaven which offers both GENEROUS room sizes and NO CHAIN. Location wise, this home is very well connected as all of the town's amenities are all just a short distance away. The centralized front door leads through to an inviting entrance hall, from here all principle rooms can be accessed. Overlooking the front is the west facing lounge which will easily accommodate all of your soft furnishings. Close by you will find the modern fitted kitchen which consists of a range of matching units, work surfaces and appliance space too. The kitchen is open onto a side loggia which offers further space and doors to both front and rear. Three bedrooms are positioned to the rear, all are a decent size and two of which also offer built in storage cupboards. Completing the interior of this lovely home is the family bathroom/wc alongside an additional separate wc. Outside space is sizeable, the rear garden comprises of a an area of lawn with shrub borders and fenced boundaries whilst the front garden offers an area of lawn which is flanked by a block paved drive which leads to the integral garage.



206 South Coast Road, Peacehaven, East  
 Sussex, BN10 8JP  
 01273 830 987  
 bnsales@localagent.co.uk



Energy Efficiency Rating		
	Current	Potential
Very energy efficient - lower running costs		
(92 plus) <b>A</b>		
(81-91) <b>B</b>		<b>85</b>
(69-80) <b>C</b>	<b>71</b>	
(55-68) <b>D</b>		
(39-54) <b>E</b>		
(21-38) <b>F</b>		
(1-20) <b>G</b>		
Not energy efficient - higher running costs		
<b>England &amp; Wales</b>	EU Directive 2002/91/EC	