

Rowe Avenue, Peacehaven, BN10 7RT  
Asking Price £359,950





This well presented three/four double bedroom home is a true gem waiting to be discovered. As you step inside, you'll be greeted by a spacious family home boasting three double bedrooms, perfect for a growing family or those in need of extra space. Furthermore the property features a versatile ground floor bedroom/study, ideal for those working from home or in need of a quiet retreat.

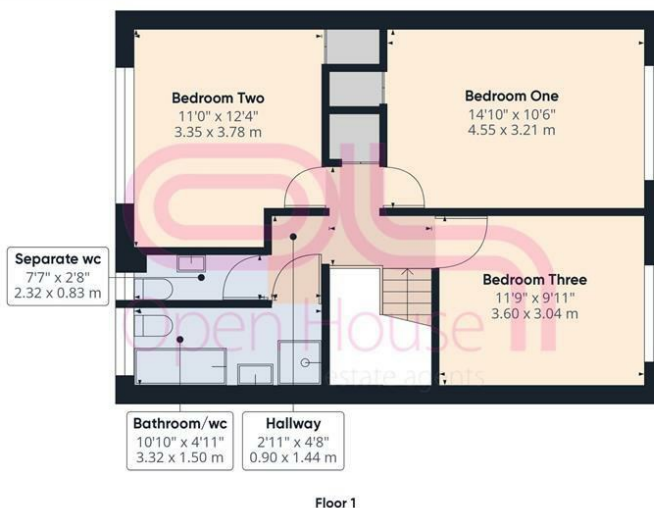
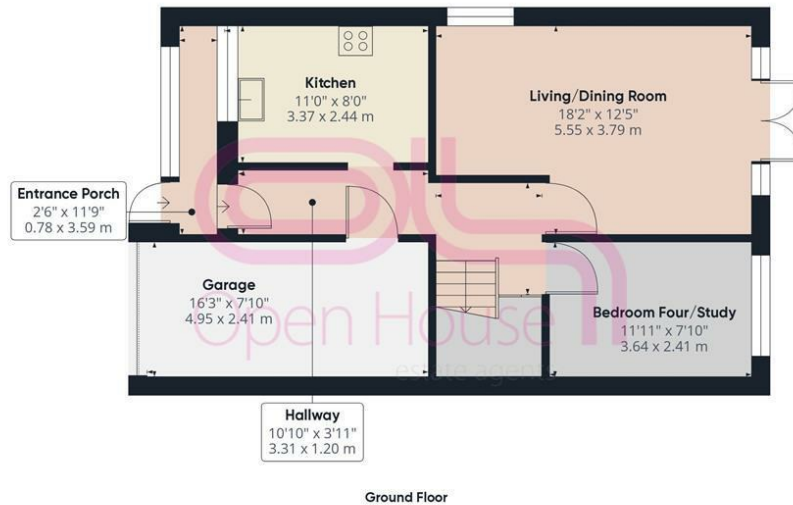


Open House BN Sales

The lounge/dining room is a cosy haven, complete with patio doors that open up to the rear garden, allowing natural light to flood the space.

The modern refitted kitchen is a chef's dream, offering a stylish and functional space to whip up culinary delights. The modern bathroom adds a touch of luxury to everyday living, providing a relaxing sanctuary to unwind after a long day.

Situated on a no-through road near the main south coast road, convenience is at your doorstep. Parking is a breeze with space for two vehicles, including an integral garage and private drive. The level rear garden is perfect for outdoor gatherings, with a patio area for al fresco dining or simply soaking up the sun.



Approximate total area<sup>®</sup>  
1201.04 ft<sup>2</sup>  
111.58 m<sup>2</sup>

(1) Excluding balconies and terraces

While every attempt has been made to ensure accuracy, all measurements are approximate, not to scale. This floor plan is for illustrative purposes only.

Calculations are based on RICS IPMS 3C standard.

GIRAFFE360