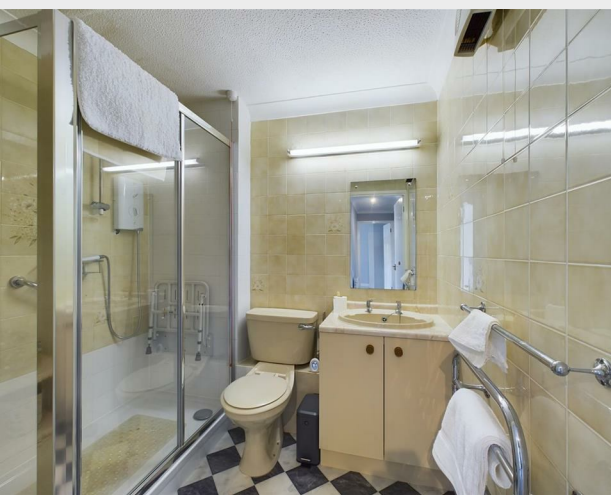


33 Homeridge House, Longridge Avenue, Saltdean,  
Brighton, BN2 8RQ  
Leasehold



Welcome to Homeridge House, a charming retirement flat located in a central area close to shops and bus routes. This delightful property boasts a generous living room, a bedroom, and a bathroom, making it a cosy and manageable living space for those looking to downsize or enjoy a peaceful retirement.

Recently redecorated with a brand-new kitchen, this flat offers a fresh and modern feel, perfect for those seeking a comfortable and stylish home. The well-maintained apartment block provides a sense of community and security, with the added bonus of a residents lounge where you can socialise and relax with neighbours.

Conveniently situated with easy access to amenities and public transport, this property is ideal for those who value a central location. With no chain involved, the process of making this lovely flat your new home is made even smoother.

Don't miss out on the opportunity to own this wonderful retirement flat at Homeridge House. Embrace a relaxed and convenient lifestyle in this welcoming community.



**206 South Coast Road  
Peacehaven  
East Sussex  
BN10 8JP**

**01273 830 987**

**bnsales@localagent.co.uk**

**www.openhousebrighton.co.uk**

### Living Room

14'6 x 12' (4.42m x 3.66m)

### Bedroom

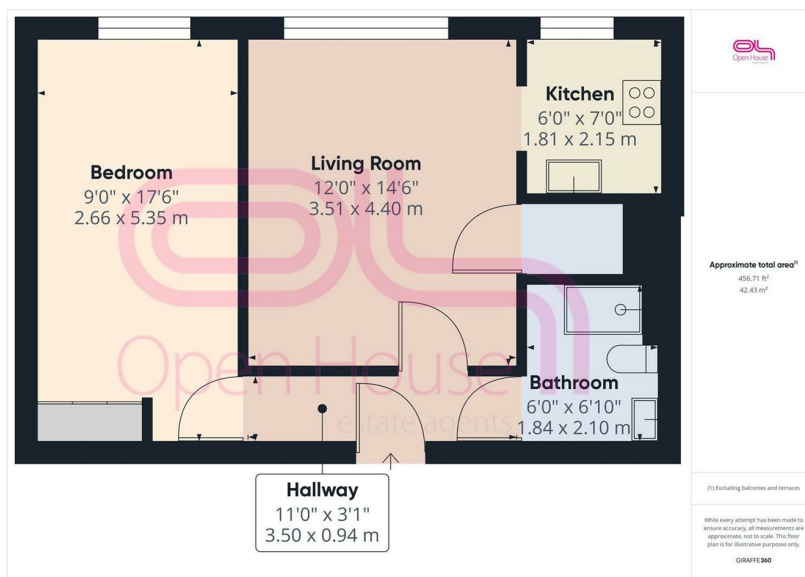
17'6 x 9 (5.33m x 2.74m)

### Kitchen

7' x 6' (2.13m x 1.83m)

### Shower Room

6'10 x 6'10 (2.08m x 2.08m)



Energy Efficiency Rating		Current	Potential
Very energy efficient - lower running costs			
(82 plus) A			
(61-81) B		77	85
(69-80) C			
(55-68) D			
(39-54) E			
(21-38) F			
(1-20) G			
Not energy efficient - higher running costs			
England & Wales		EU Directive 2002/91/EC	

