

Firle Road, Peacehaven, BN10 7QN
Offers Over £325,000
Council Tax Band: C



Welcome to Firle Road, Peacehaven - a charming bungalow that offers a DELIGHTFUL LIVING EXPERIENCE. This property boasts a spacious 807 sq ft of living space, featuring a BRIGHT LIVING ROOM, two cosy bedrooms, and a MODERN BATHROOM.

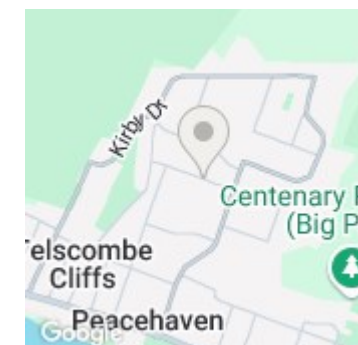
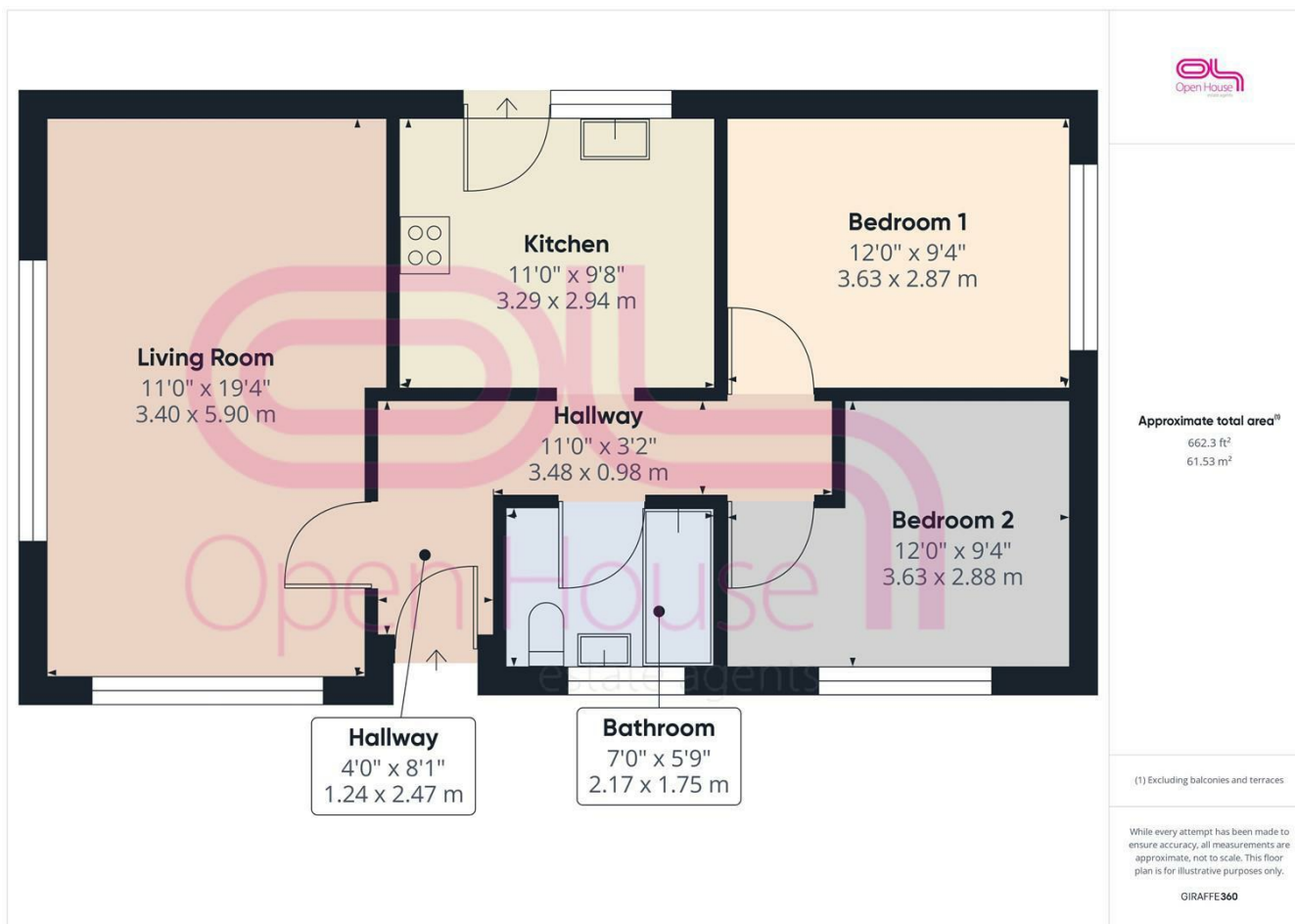
Situated on a LARGE CORNER PLOT, this bungalow provides ample outdoor space for relaxation and entertainment. The added convenience of a HARDSTAND FOR A MOTORHOME is a rare find and perfect for those with a passion for travel.

Adding contemporary elegance to the property the Kitchen, bathroom and the rewiring were all renewed in 2022 making it move-in ready for its new owners. Parking will never be an issue with space for several vehicles, ensuring both convenience and peace of mind.

Whether you're looking for a peaceful retreat or a cosy home to settle down in, this bungalow on Firle Road offers the perfect blend of comfort and convenience. Don't miss out on the opportunity to make this charming property your own.



206 South Coast Road, Peacehaven, East
Sussex, BN10 8JP
01273 830 987
bnsales@localagent.co.uk



Energy Efficiency Rating		Current	Potential
Very energy efficient - lower running costs			
(92 plus)	A		
(81-91)	B		84
(69-80)	C		
(55-68)	D	59	
(39-54)	E		
(21-38)	F		
(1-20)	G		
Not energy efficient - higher running costs			
England & Wales		EU Directive 2002/91/EC	