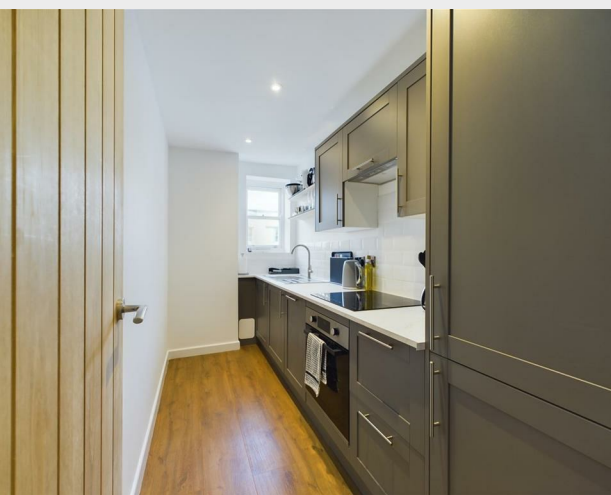


8, Lower Rock Gardens, Brighton, BN2 1PG  
Leasehold - Share of Freehold  
Asking Price £275,000



Welcome to this charming flat located in the heart of Lower Rock Gardens, Brighton. Situated just moments away from the iconic Brighton seafront, this second-floor conversion in a period building offers a unique opportunity to experience coastal living at its finest.

As you step into this property, you are greeted by a delightful reception room boasting high ceilings and excellent decoration throughout. The superb kitchen and shower room provide modern convenience while maintaining the character of the period building.

Imagine relaxing in the lounge and catching glimpses of the sea, creating a tranquil and picturesque setting right in the comfort of your own home. The bedroom offers a peaceful retreat, perfect for unwinding after a long day.

Located in the popular Kemp Town area, this flat is surrounded by a vibrant community with an array of amenities, shops, and restaurants to explore. Additionally, the property is offered with no chain, making the purchasing process smooth and hassle-free.

Don't miss out on the opportunity to own a piece of Brighton's coastal charm. Contact us today to arrange a viewing and experience the allure of this seaside flat for yourself.



**206 South Coast Road  
Peacehaven  
East Sussex  
BN10 8JP  
01273 830 987  
bnsales@localagent.co.uk**

[www.openhousebrighton.co.uk](http://www.openhousebrighton.co.uk)

### Living Room

15'4 x 9'11 (4.67m x 3.02m)

### Kitchen

11'10 x 5'2 (3.61m x 1.57m)

### Bedroom

8'4 x 7'11 (2.54m x 2.41m)

### Shower Room

5'4 x 5'3 (1.63m x 1.60m)

