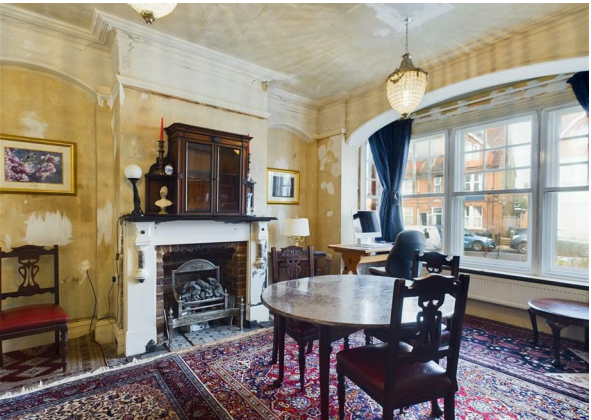


Sutton Park Road, Seaford, East Sussex, BN25 1RP

Asking Price £475,000

Council Tax Band: D



Nestled in this POPULAR LOCATION of Seaford and close to Seaford High Street and Seaford Train Station, is this SUBSTANTIAL PERIOD HOME which is a hidden gem waiting to be polished to its full POTENTIAL. With its classic charm and character, this property offers versatile accommodation that can be transformed into a dream home with a touch of modernisation and updating.

Boasting five bedrooms and four reception rooms, there is ample space for a growing family or those who love to entertain. The period features throughout the house add a touch of elegance and history, creating a unique atmosphere that is hard to find in modern properties.

Whether you are looking to restore a piece of history or create a modern masterpiece, this house provides the perfect canvas for your imagination to run wild. Don't miss this opportunity to own a piece of Seaford's history and make it your own.

With the size and space that this home offers, the potential is endless and could be transformed into a magnificent home or for someone to utilise the rooms and change the property into a commercial property, maybe a doctors surgery or dentist practice or maybe even a childrens nursery, all subject to the necessary consents.



206 South Coast Road, Peacehaven, East
Sussex, BN10 8JP
01273 830 987
bnsales@localagent.co.uk



Energy Efficiency Rating		
	Current	Potential
Very energy efficient - lower running costs		
(92 plus) A		
(81-91) B		80
(69-80) C	66	
(55-68) D		
(39-54) E		
(21-38) F		
(1-20) G		
Not energy efficient - higher running costs		
England & Wales	EU Directive 2002/91/EC	