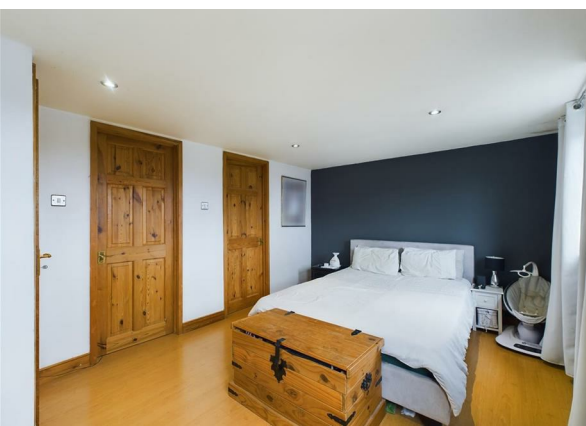


Woodlands Close, Peacehaven, BN10 7SF

Asking Price £329,950

Council Tax Band: D



This charming home offers a perfect blend of space and comfort for a growing family. Boasting four bedrooms and two bathrooms, this extended family home provides ample living space for everyone.

Although the property requires some updating and redecoration, the potential it holds is truly exciting. Priced to reflect this need for a personal touch, this house is a blank canvas waiting for its new owners to make it their own.

The main bedroom is a true sanctuary with its own ensuite and a walk-in wardrobe, offering the potential for a touch of luxury and privacy. The property also features a south-facing living room, providing a bright and airy space for relaxation and entertaining, with enough room for a dining table to host family gatherings.

Conveniently located in a quiet residential area, this property is within easy reach of schools, bus routes, and shops, making daily errands a breeze. Parking will never be an issue with space for two vehicles, including a garage and an off-road parking space.

Don't miss the opportunity to own this delightful family home with a south-facing rear garden, offering a peaceful retreat for outdoor activities and relaxation.



206 South Coast Road, Peacehaven, East
Sussex, BN10 8JP
01273 830 987
bnsales@localagent.co.uk

