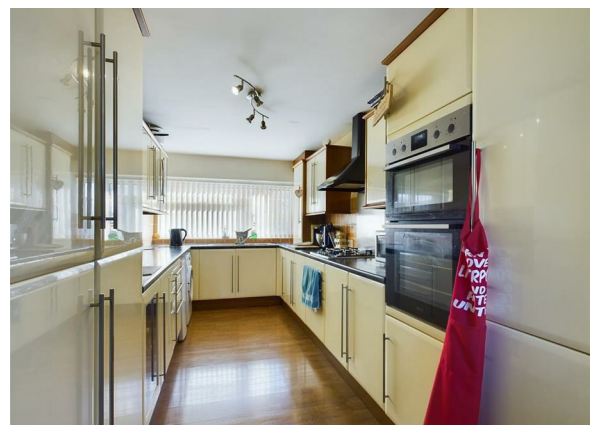


**Dorothy Avenue North, Peacehaven**  
**Offers In The Region Of £385,000**  
**Four Bedrooms**  
**Freehold**



Situated in this popular area of Dorothy Avenue North, Peacehaven, this SPACIOUS FAMILY HOME offers an IDEAL SETTING for those seeking comfort and convenience. Boasting FOUR well-proportioned bedrooms, this property is perfect for families or those who desire EXTRA SPACE. The house features two inviting reception rooms, providing ample room for relaxation and entertaining guests.

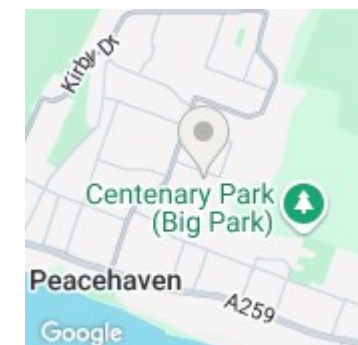
The property is presented in good decorative order, allowing you to move in with ease and make it your own. The interior is designed to create a warm and welcoming atmosphere, making it a delightful place to call home.

Outside, you will find a level lawned rear garden, perfect for children to play or for hosting summer barbecues with family and friends. Additionally, the property offers parking for several vehicles, a valuable feature in this sought-after location.

This house is not just a place to live; it is a home where memories can be made. With its generous space and practical layout, it is an excellent opportunity for anyone looking to settle in a friendly community. Do not miss the chance to view this lovely property and envision your future in this delightful family home.



206 South Coast Road, Peacehaven, East  
Sussex, BN10 8JP  
01273 830 987  
bnsales@localagent.co.uk



Energy Efficiency Rating		Current	Potential
Very energy efficient - lower running costs			
(92 plus)	A		
(81-91)	B		79
(69-80)	C		
(55-68)	D	65	
(39-54)	E		
(21-38)	F		
(1-20)	G		
Not energy efficient - higher running costs			
England & Wales		EU Directive 2002/91/EC	