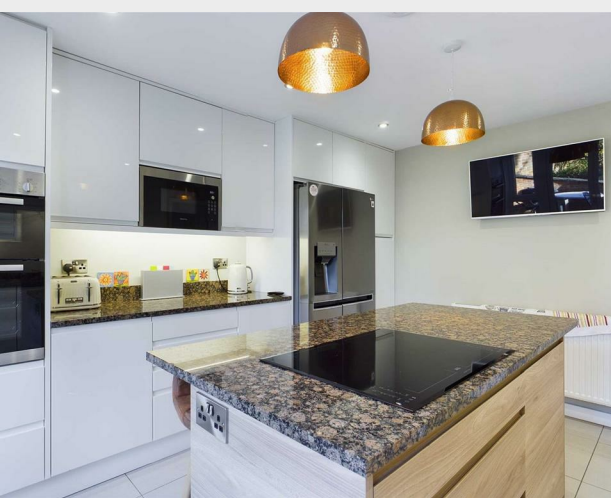
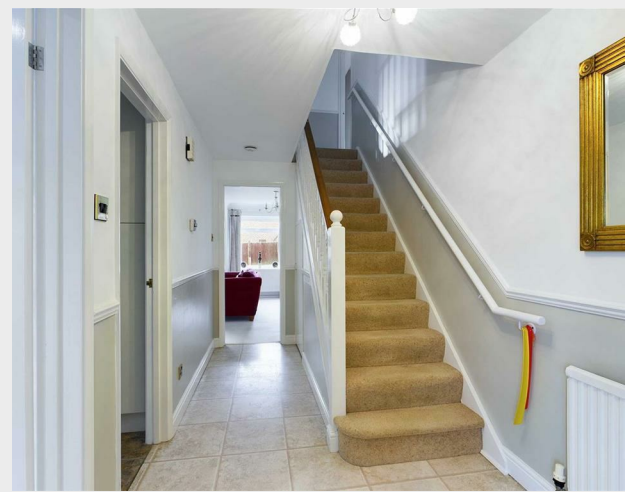


2 Woodlands Close, Peacehaven, East Sussex, BN10
7SF
Freehold



A fantastic opportunity to acquire a STUNNING FAMILY HOME situated in a desirable close towards the heart of Peacehaven. This wonderful detached home features up to FIVE BEDROOMS, OFF ROAD PARKING FOR UPTO SIX CARS and a sizeable TWIN GARAGE

Upon entry you will find an entrance porch with ample storage for coats and shoes. The porch flows into a bright hallway which offers space for any hall furniture you might see fit, whilst the neutral tones provide a feeling of modernity. Located on the ground floor is the study/bedroom five which is ideal for those who may choose to work from home alongside a well styled w/c. A COMMODIOUS LOUNGE/DINING AREA is located to the rear and is perfect for entertaining or accommodating a large family, there is also an abundance of space available to fit in a variety of furniture. The LARGE GLAZED AND BRICK CONSERVATORY offers views of the beautifully LANDSCAPED GARDEN, making this an ideal place to enjoy a meal whether alone or with company. The feeling of modernity is continued throughout the BESPOKE KITCHEN, which is finished with stunning GRANITE WORKTOPS, induction hob, integrated appliances, central island and French doors which provide direct access to the rear garden.

Moving upstairs, a generous sized landing allows access to four bedrooms and the family bathroom. The master bedroom is extremely spacious and comes complete with fitted wardrobes and a beautifully styled en-suite shower room. There are a two further double bedrooms and a single bedroom with integrated wardrobe space. The family



206 South Coast Road
Peacehaven
East Sussex
BN10 8JP

01273 830 987

bnsales@localagent.co.uk

www.openhousebrighton.co.uk

Hallway

Cloakroom

5'3" x 2'9" (1.61 (1.60) x 0.83 (0.84))

Lounge/Dining Room

18'7" x 18'2" Max (5.66 x 5.54 Max)

Kitchen

12'4" x 12'0" (3.77 (3.76) x 3.66)

Kitchen.

12'4" x 12'0" (3.77 (3.76) x 3.66)

Conservatory

14'3" x 9'9" (4.35 (4.34) x 2.98 (2.97))

Study/Bedroom 5

11'3" x 5'5" (3.42 (3.43) x 1.66 (1.65))

Utility Room

11'2" x 4'11" (3.40 x 1.51 (1.50))

Master Bedroom

12'6" x 12'1" (3.81 x 3.68)

En-Suite

9'5" x 6'6" (2.87 x 1.98)

Family Bathroom

6'5" x 8'0" (1.95 (1.96) x 2.43 (2.44))

Bedroom 2

12'6" x 10'11" (3.81 x 3.34 (3.33))

Bedroom 3

9'11" x 6'8" (3.01 (3.02) x 2.03)

Bedroom 4

9'11" x 11'0" (3.01 (3.02) x 3.35)

Front Garden

98'5" x 59'1" (30.00 x 18.00 (18.01))

Garden

